

## Centers the clay pellet in 10 seconds

**CENTRAFACIL** It adapts to electric pottery wheels with splash pan like: Shimpo, Brent, forns, vevor, etc.

**Clay centering in seconds. Ideal for beginners, hobbyists and users with problems centering lumps of clay up to 5 kg.**

**Centrafacil is the invention to solve the difficulty of correctly centering clay on a potters wheel.**

### Assembly of the “centrafacil” (fig 1)

#### Method for correctly centering clay

**1) Adapt the “centrafacil” to the dimensions of your wheel.** Once the entire tool has been assembled, place it on top of the wheel as indicated in (fig 2). You raise or lower plate **B** until structure **A** is parallel to the plate. Gently tighten the **L** screw.

**If you don't change wheels you will only perform this action the first time.**

2) Remove the “centrafacil” from the wheel and place the clay ball in the center of the plate, and raise and lower the clay several times and leave it centered as best as you can.

3) Stop the wheel and place the “centrafacil” on it again. Now you move structure **A** until plate **B** touches the clay and move the 2 fixators **T** until they touch the inside side of the splashpan. Gently squeeze these fasteners. It is important that the “centrafacil” remains steady between the clay lump the splashpan. (fig 3)

4) Centering of the clay.

Hold the “centrafacil” firmly with one hand gripping the handle, using gentle force towards the outside of the wheel to immobilize it. Plate **B** will act as the “still hand”.

With the clay well wet, operate the wheel at the usual centering speed. The other hand holds the clay directly and presses it towards plate **B**, and when the clay completely touches the plate, the lump will be perfectly centered in a few seconds.

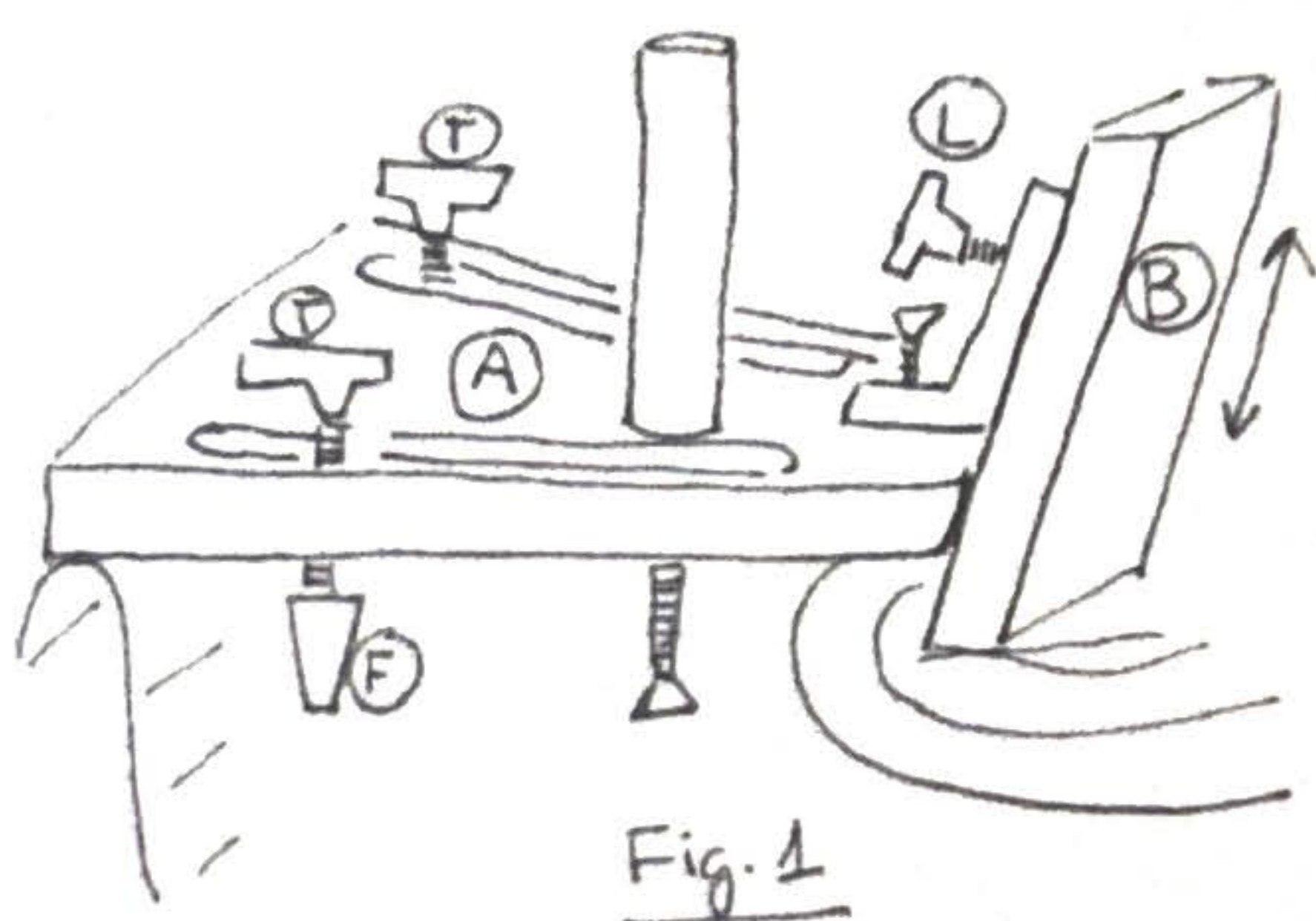
Now you can remove the “centrafacil” upwards and continue with your work. (fig 4)

If it is not centered correctly, it is because the bottom of the lump does not touch the plate.

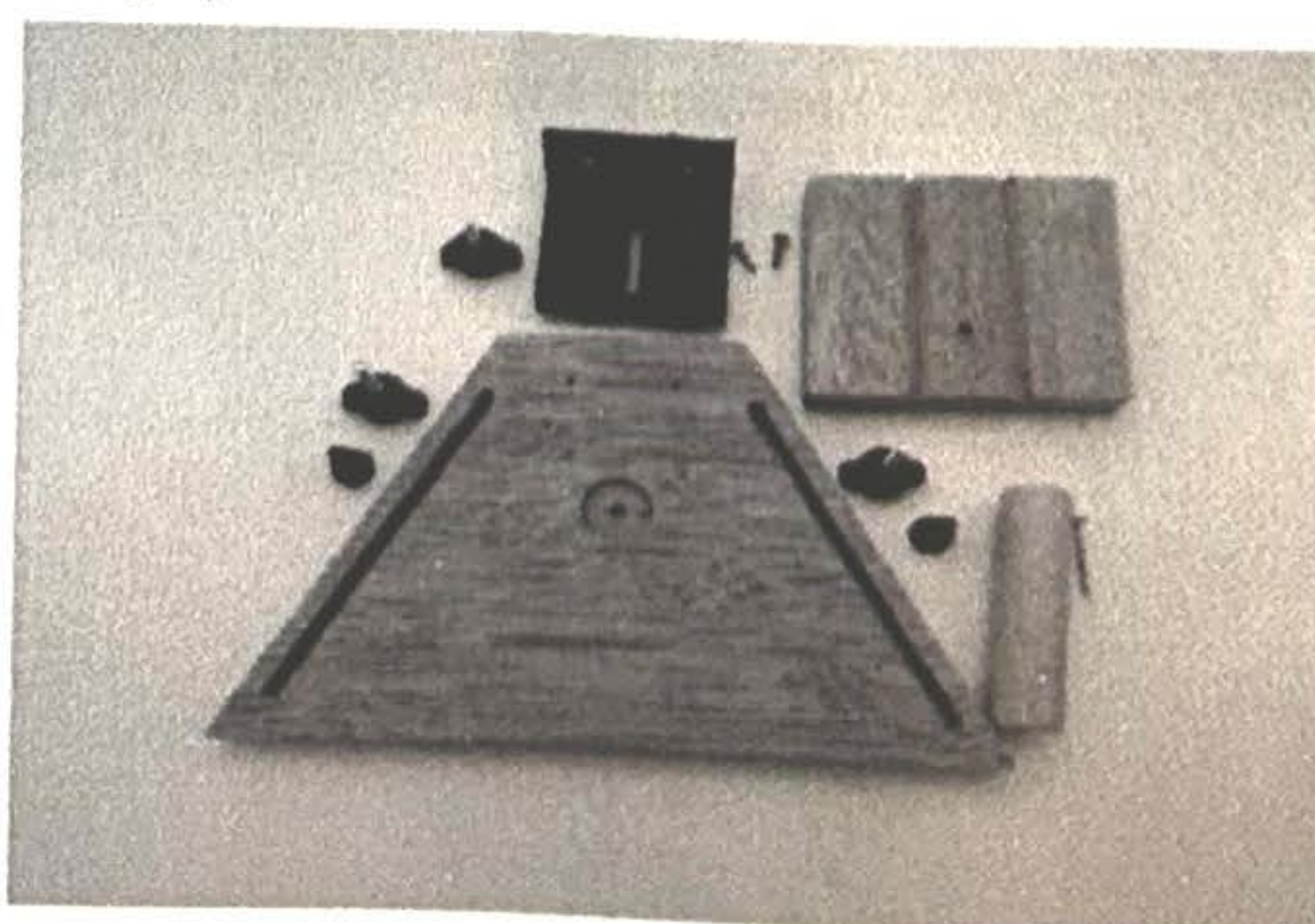
Note: From time to time wipe an oiled cloth over the entire bamboo surface.

**Bamboo wood from exemplarily managed forests. FSC C169559 Untreated bonding.**

(1)



(1)



(2)



(3)



(4)

